

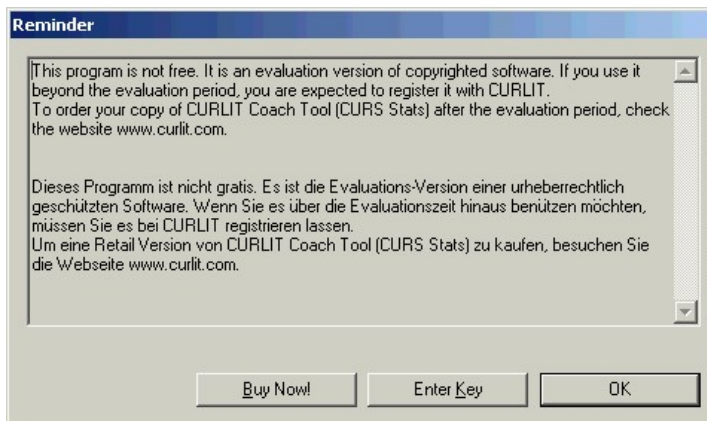


## CURLIT Coach Tool: Install Key

Depending on the number of days you are using the evaluation copy, the way to install the key to convert your copy to a full customer version is different.

### A Evaluation Copy is asking for a key

1. Start CURLIT Coach Tool
2. You will be reminded that this is an evaluation copy:



3. Click 'Enter Key'
4. A dialog window like this will show up:



5. Send the Hardware fingerprint plus your name and your club/hometown to CURLIT (order@curlit.com)
6. You get an email from CURLIT with two red lines containing name and key. Copy both red lines (name and key) from that e-mail
7. Put the cursor into the field Name
8. Paste (use Ctrl-v), both lines should be filled out
9. Click OK
10. CURLIT Coach Tool will start as customer version (with your name in the lower right corner) and will never ask for a key again.

You can download small updates from the Internet free of charge, without entering a new key. New major versions with additional functionality will require a new key.

## B Coach Tool is not asking for a key

(Usually right after installation)

1. Start CURLIT Coach Tool
2. Select menu 'Help', item 'About...'
3. An Info-box will show up



4. Press the CURLIT logo
5. A dialog with information about the your installation appears
6. Click 'Yes'
7. After a while, the message box 'Enter Key' shows up:



8. Send the Hardware fingerprint plus your name and your club/hometown to CURLIT ([order@curlit.com](mailto:order@curlit.com)), if you have not done already
9. You get an email from CURLIT with two red lines containing name and key. Copy both red lines (name and key) from that e-mail
10. Put the cursor into the field Name
11. Paste (use Ctrl-v), both lines should be filled out
12. Click OK
13. Close the running copy of the Coach Tool
14. Start Coach Tool again
15. CURLIT Coach Tool will start as customer version (with your name in the lower right corner) and will never ask for a key again.

You can download small updates from the Internet free of charge, without entering a new key. New major versions with additional functionality will require a new key.